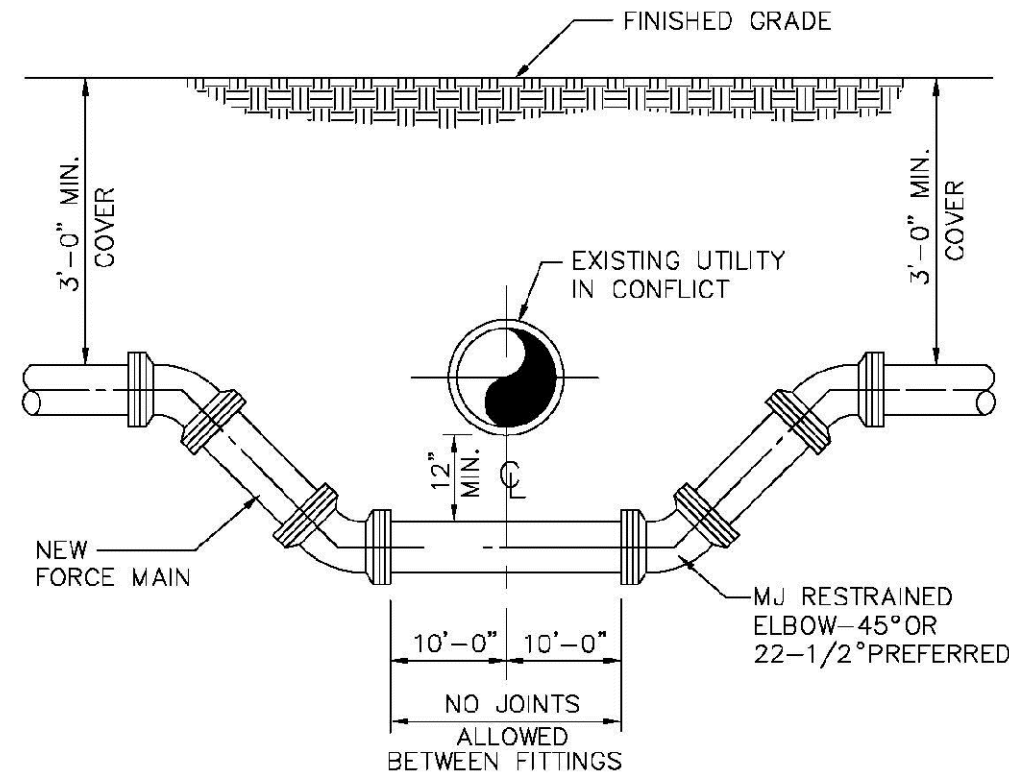


- NOTES:
- CONCRETE COLLAR IS NOT REQUIRED IN PAVED AREAS IF PAVEMENT SURFACE IS FINISHED PRIOR TO CONDITIONAL FINAL INSPECTION.
 - WHEN OPERATING NUT IS DEEPER THAN 35" A ONE PIECE EXTENSION WILL BE REQUIRED TO BRING OPERATING NUT 20"-30" BELOW FINISHED GRADE. EXTENSION BOLTS & NUTS ARE TO BE STAINLESS STEEL. A HIGH STRENGTH STEEL CENTERING PLATE, WELDED TO THE EXTENSION, IS ALSO REQUIRED.
 - VALVE BOXES SHALL HAVE COVERS MARKED "SEWER".
 - EXTENSION VALVE BOX TO BE D.I.P. OR C-900 P.V.C. DR 18 (COLOR: GREEN)
 - A CUT-IN INSTALLATION SHALL REQUIRE MEGALUGS OR EQUAL THROUGHOUT ASSEMBLY.
 - IN ORDER TO MAINTAIN ADEQUATE COVER OVER VALVE NUT, THE FOLLOWING MINIMUM COVERS OVER PIPE ARE REQUIRED:
- | GATE VALVE SIZE | MIN. COVER OVER PIPE |
|-----------------|----------------------|
| 18" | 48" |
| 20" | 54" |
| 24" | 60" |
| 30" | 72" |
| 36" | 84" |

FORCE MAIN PLUG VALVE SETTING

ENGINEERING STANDARDS 2025

REVISIONS		ENGINEERING DIVISION	PLUG VALVE SETTING	DATE: JUNE 2022 DWG. NO.
BY	DATE			
S.S.	01/27/12	CITY OF POMPAÑO BEACH		
		SCALE: N.T.S.		205-1

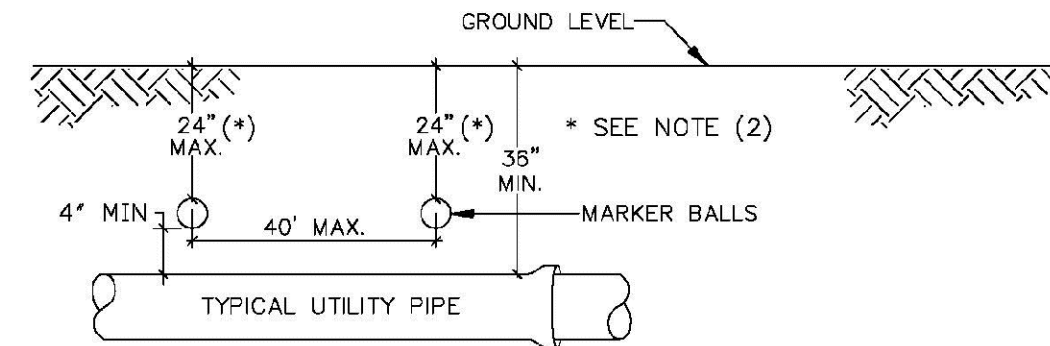


- NOTES:
- WHERE CONDITIONS PERMIT, PIPE DEFLECTION MAY BE USED INSTEAD OF BENDS TO OBTAIN THE MINIMUM CLEARANCE. FACTORY OFFSETS MAY BE USED.

TYPICAL CONFLICT DETAIL

ENGINEERING STANDARDS 2025

REVISIONS		ENGINEERING DIVISION	TYPICAL CONFLICT (SEWER)	DATE: JUNE 2022 DWG. NO.
BY	DATE			
S.S.	JUNE 2005	CITY OF POMPAÑO BEACH		
S.S.	02/13/12			
		SCALE: N.T.S.		206-1



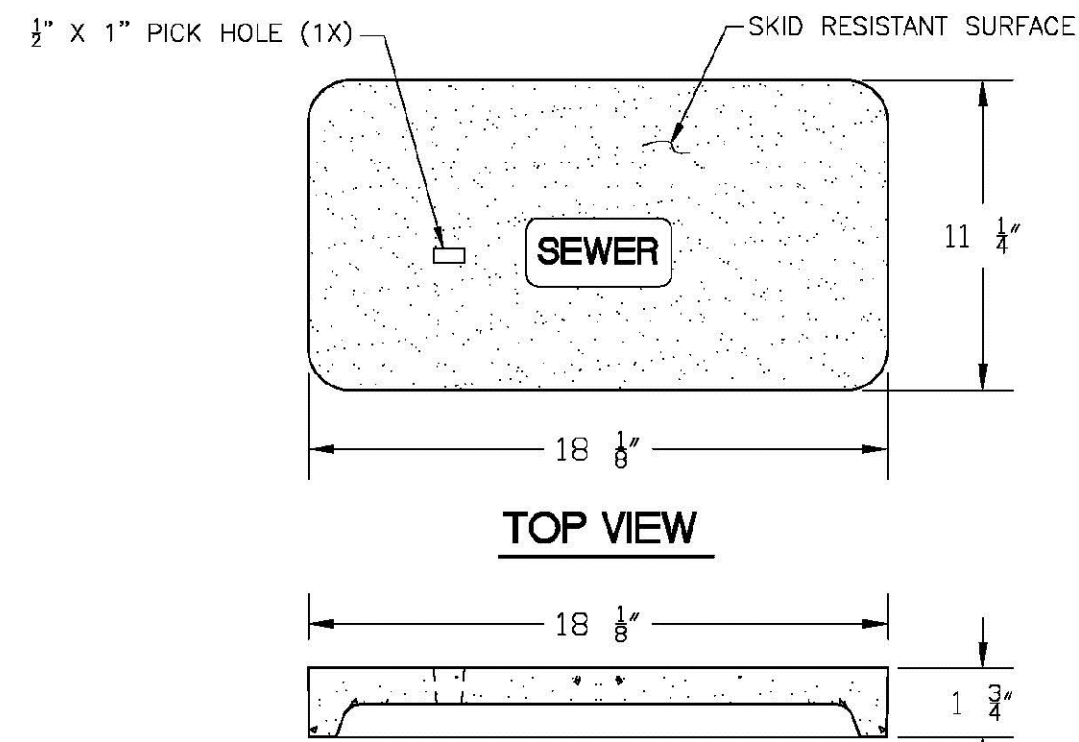
GENERAL NOTES:

- ALL UTILITY PIPE SHALL BE INSTALLED WITH 4"Ø MARKING BALLS PLACED EVERY 40' AND AT EVERY FITTING, FOR IDENTIFICATION AND WARNING PURPOSES, BURIED ABOVE THE PIPE AT A MAXIMUM DEPTH OF 24 INCHES OR AS APPROVED BY THE OWNER. IT SHALL BE COLOR CODED AND WORDED AS FOLLOWS:
SEWER SYSTEM
A. COLOR: GREEN
B. LETTERING: SANITARY SEWER
C. FREQUENCY OF MARKER BALLS SHALL BE 121.6 KHz.
D. THE MARKER BALLS CAN BE BURIED IN ANY ORIENTATION.
THE MARKER BALLS SHALL BE DETECTABLE BY STANDARD METAL DETECTION EQUIPMENT AND SHALL BE MANUFACTURED BY TEMPO OR 3M LOCATOR SYSTEM OR EQUIVALENT (FREQUENCY 121.6 KHz.)
- FOR LARGE DIAMETER PIPE INSTALLED AT DEPTHS BELOW 4'-0" MARKER BALLS SHALL BE PLACED AT A MAXIMUM DEPTH OF 4'-0" BELOW GRADE *.

SEWER PIPE IDENTIFICATION

ENGINEERING STANDARDS 2025

REVISIONS		ENGINEERING DIVISION	SEWER PIPE IDENTIFICATION	DATE: JUNE 2022 DWG. NO.
BY	DATE			
S.S.	01/30/12	CITY OF POMPAÑO BEACH		
		SCALE: N.T.S.		207-1



NOTE

- MATERIAL: FIBERGLASS REINFORCED POLYMER CONCRETE & FIBERGLASS REINFORCED POLYMER
- COLOR: GREEN
- LOAD RATING: AB (ASTM C857)
- LOGO: SEWER

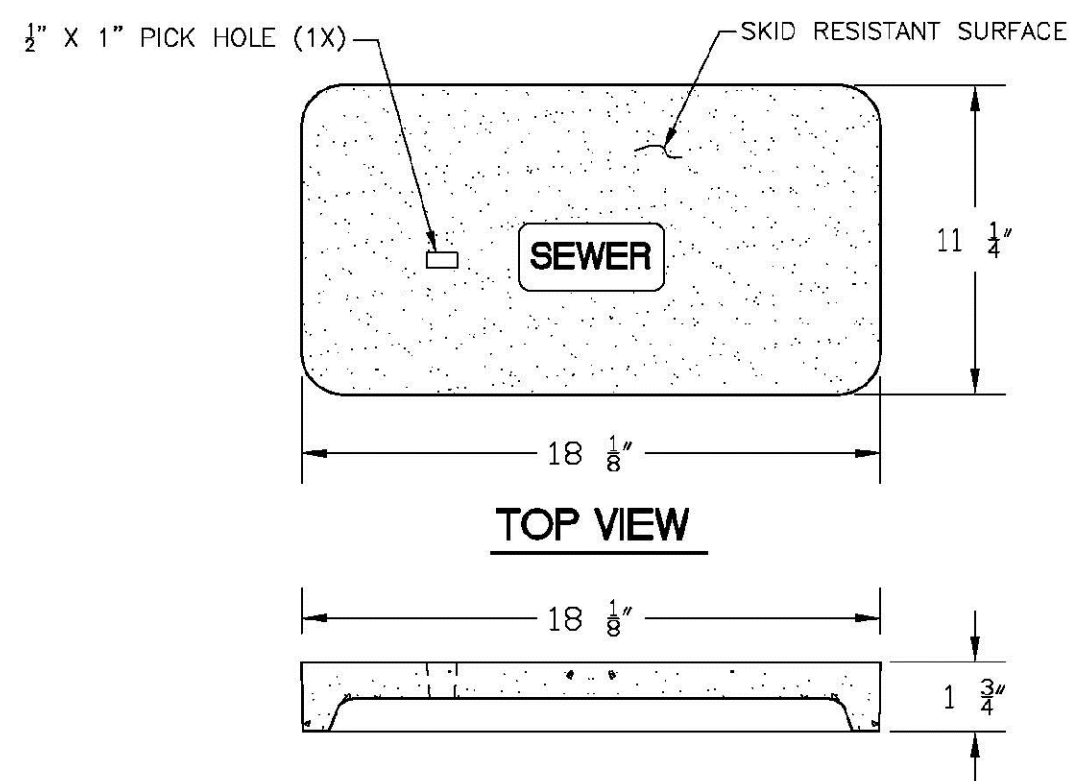
SEWER BOX AND COVER

PRODUCT RATING - NON TRAFFIC

PRODUCT RATING - NON TRAFFIC						
LOAD DESIGNATION	DESCRIPTION	DESIGN LOADS			TESTING	
		LIVE LB/WHEEL (2)	LIVE + IMPACT LB/WHEEL	SIDE PSF (3)	LOAD,LBS	SAFETY FACTOR
AASHTO H10	LIGHT TRUCK TRAFFIC	8,000	10,400	N/A	22,568 (4)	2.82

ENGINEERING STANDARDS 2025

REVISIONS		ENGINEERING DIVISION	SEWER BOX AND COVER CDR Part No. WB03-1118-12 CDR Part No. WC00-1118-02	DATE: JUNE 2022 DWG. NO.
BY	DATE			
		CITY OF POMPAÑO BEACH		
		SCALE: N.T.S.		210-1



NOTE

- MATERIAL: FIBERGLASS REINFORCED POLYMER CONCRETE & FIBERGLASS REINFORCED POLYMER
- COLOR: GREEN
- LOAD RATING: AB (ASTM C857)
- LOGO: SEWER

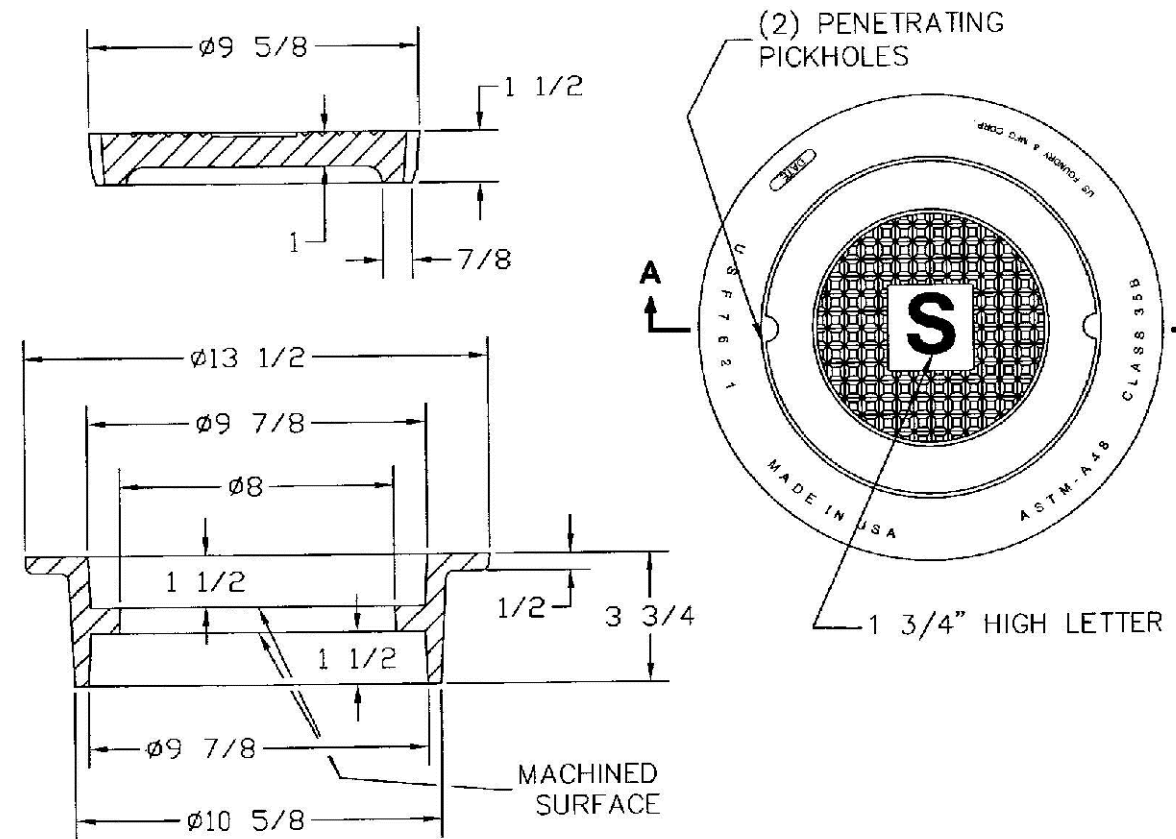
SEWER BOX AND COVER

PRODUCT RATING - TRAFFIC

PRODUCT RATING - TRAFFIC						
LOAD DESIGNATION	DESCRIPTION	DESIGN LOADS			TESTING	
		LIVE LB/WHEEL (2)	LIVE + IMPACT LB/WHEEL	SIDE PSF (3)	LOAD,LBS	SAFETY FACTOR
AASHTO H15	MEDIUM TRUCK TRAFFIC	12,000	15,600	N/A	27,000 (5)	2.25

ENGINEERING STANDARDS 2025

REVISIONS		ENGINEERING DIVISION	SEWER BOX AND COVER CDR Part No. WB04-1118-12 CDR Part No. WC02-1118-02	DATE: JUNE 2022 DWG. NO.
BY	DATE			
S.S.	12/05/18	CITY OF POMPAÑO BEACH		
		SCALE: N.T.S.		210-2



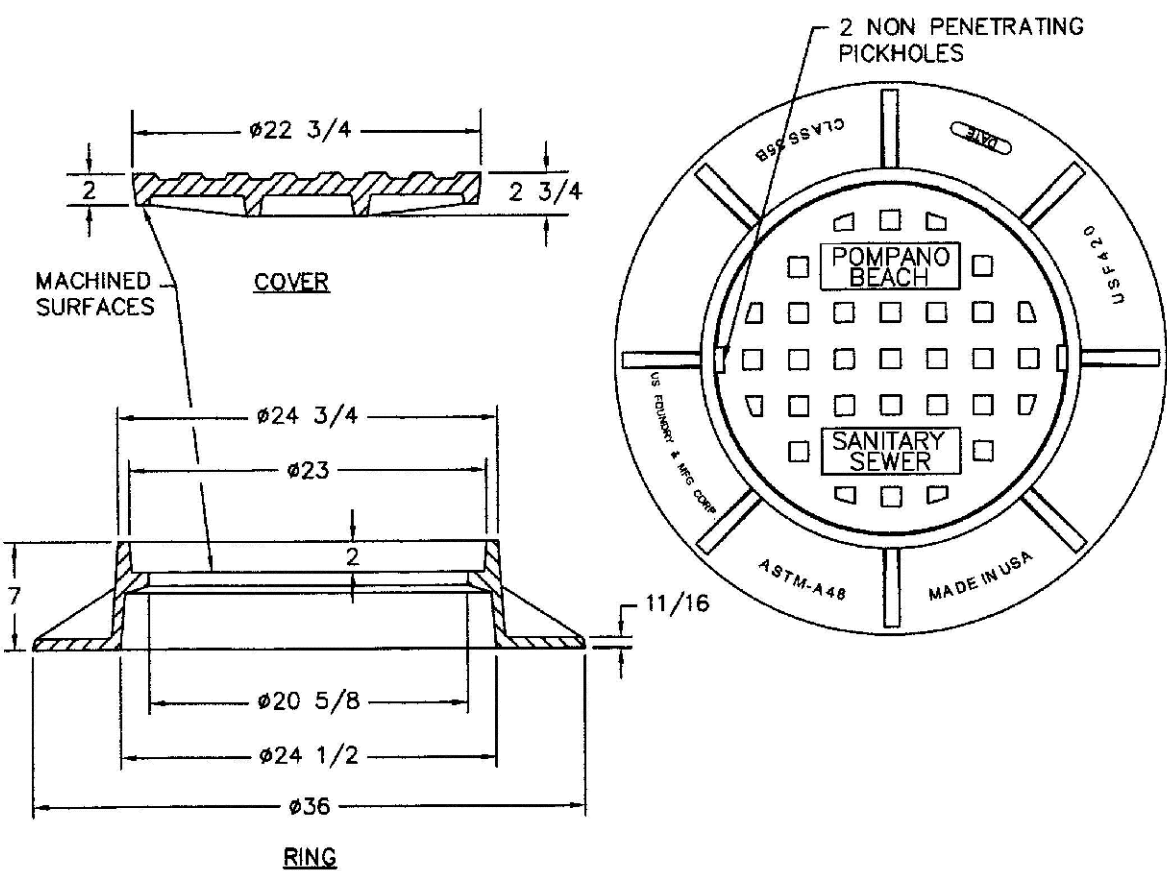
NOTE

- MATERIAL: Gray Cast Iron
ASTM-A48 Class 35B

SEWER BOX AND COVER - HEAVY TRAFFIC

ENGINEERING STANDARDS 2025

REVISIONS		ENGINEERING DIVISION	SEWER BOX AND COVER HEAVY TRAFFIC	DATE: JUNE 2022 DWG. NO.
BY	DATE			
S.S.	12/05/18	CITY OF POMPAÑO BEACH		
		SCALE: N.T.S.		210-3



TRAFFIC RATED FRAME & COVER

ENGINEERING STANDARDS 2025

REVISIONS		ENGINEERING DIVISION	TRAFFIC RATED SEWER COVER	DATE: JUNE 2022 DWG. NO.
BY	DATE			
		CITY OF POMPAÑO BEACH		
		SCALE: N.T.S.		211-1

1857 NW 21ST STREET

HODGE MARINE
SECTION 27, TOWNSHIP 48S., RANGE 42E.
CITY OF POMPAÑO BEACH, FLORIDA
WATER AND WASTEWATER DETAILS

SIMMONS & WHITE
2581 Metrocentre Blvd West, Ste 3 | West Palm Beach, FL 33407
Authorization # 3452 | 561.478.7848

DESIGN C.M. DRAWN B.L. CHECKED APPROVED DATE

JOB NO. 25-093 DRAWING NO. 25093C10 SHEET C-10 OF C-15

1.) REVISED PER DRC PLAN REVIEW, 08/12/25 D.B.

REVISIONS

THIS ITEM HAS BEEN DIGITALLY SIGNED AND SEALED BY GREGORY FRANKLIN BOLEN, P.E. ON 8/13/2025.

PRINTED COPIES OF THIS DOCUMENT ARE NOT CONSIDERED SIGNED AND SEALED AND THE SIGNATURE MUST BE VERIFIED ON ANY ELECTRONIC COPIES.

GREGORY FRANKLIN BOLEN
No. 56729
STATE OF FLORIDA
PROFESSIONAL ENGINEER

PZ25-12000024

09/17/2025 15:09:30 ACAD_FILES\2025\25-093\CONCEPTUAL\25093C09-15_WSD.dwg 8/13/2025 1:15 PM Daniel Brunet